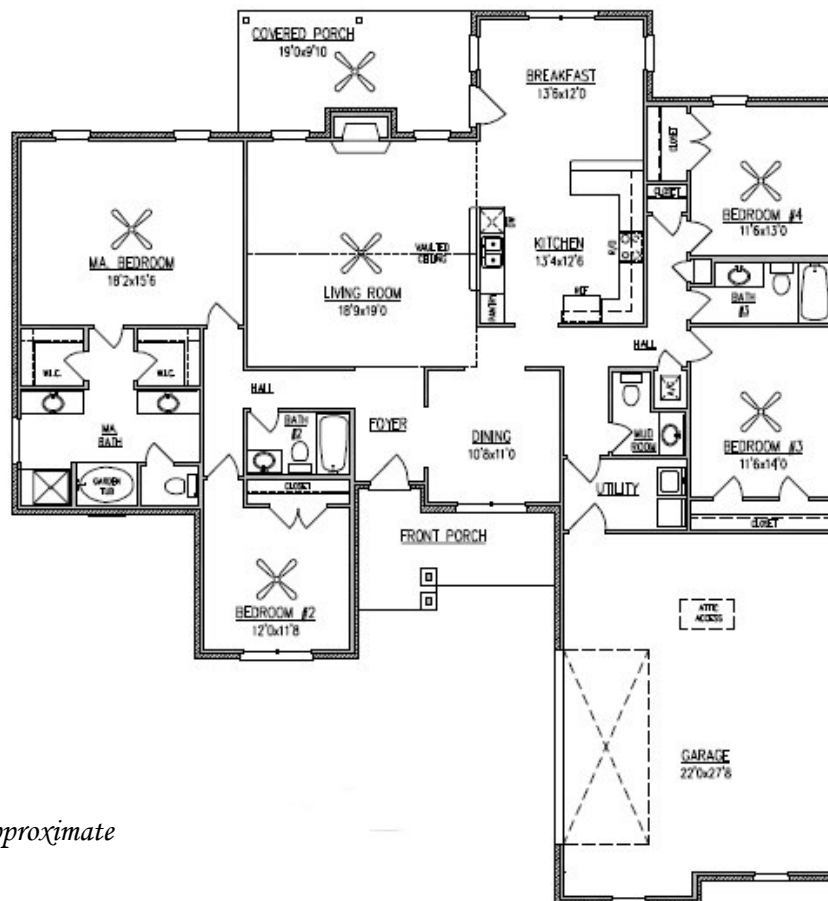


# Rutherford 2,500 Sq. Ft.



Width – 67'-8"  
Depth – 73'-7"

Note: All Dimensions Approximate



*Executive Series Homes*

2936 McVay Drive N., Mobile, AL 36606

(251) 473-8600 Office (251) 473-8797 Fax

1-800-924-7288 Toll Free or visit our website at [www.brickhome.net](http://www.brickhome.net)