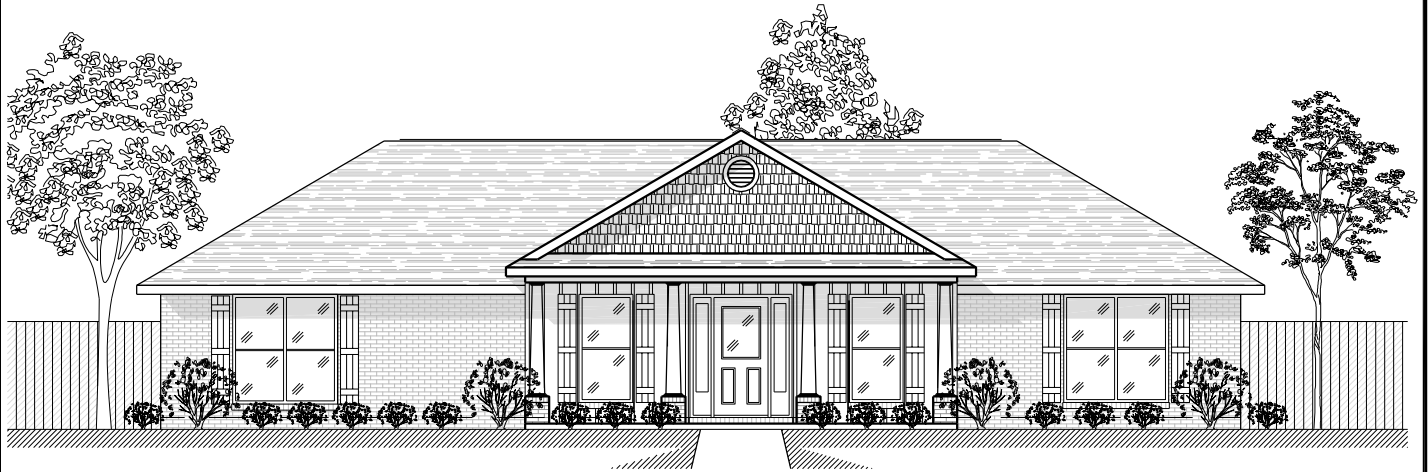
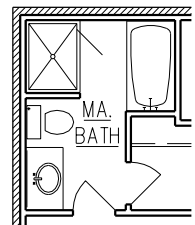
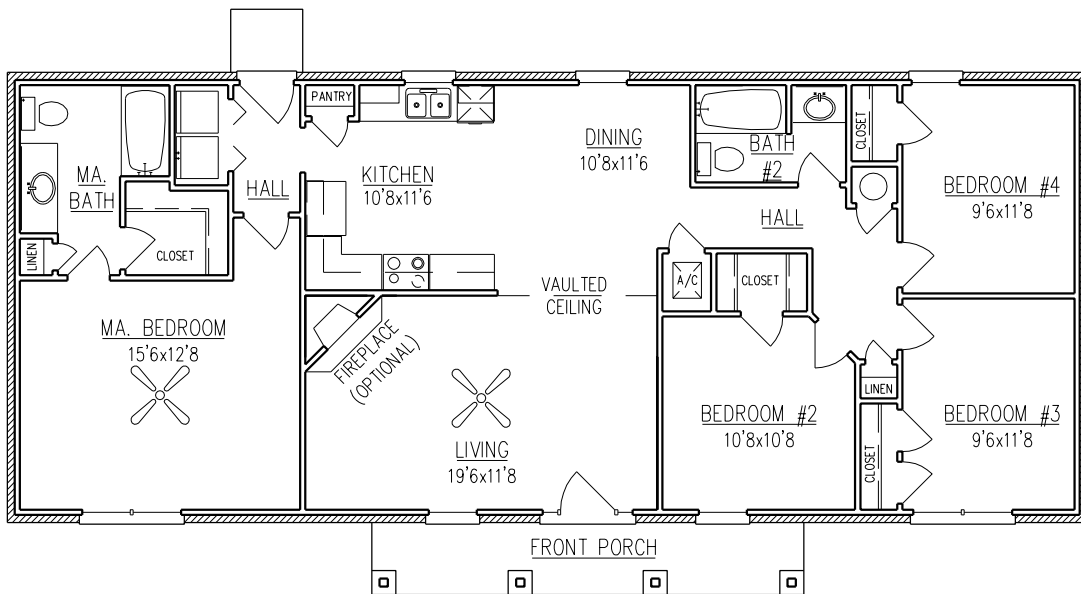


# OAKDALE

1,490 Sq. Ft.



ELEVATION (D)



OPTIONAL  
MA. BATH.

FLOOR PLAN

WIDTH - 60'-0"  
DEPTH - 29'-0"

NOTE: ALL DIMENSIONS APPROXIMATE



**BENCHMARK**  
BOYL DIVISION

Mobile Office (251) 473-8600 Fax (251) 473-8797  
2936 McVay Drive North  
Mobile, AL 36606 [www.boyl.net](http://www.boyl.net)  
Foley Office (251) 943-2695 Fax (251) 943-7096  
16478 Highway 98 West  
Foley, AL 36535 Toll Free 1-800-924-7288

BROCHURE IS AN EXAMPLE NOT AN EXACT REPRESENTATION. ELEVATION AND FEATURES MAY DIFFER.